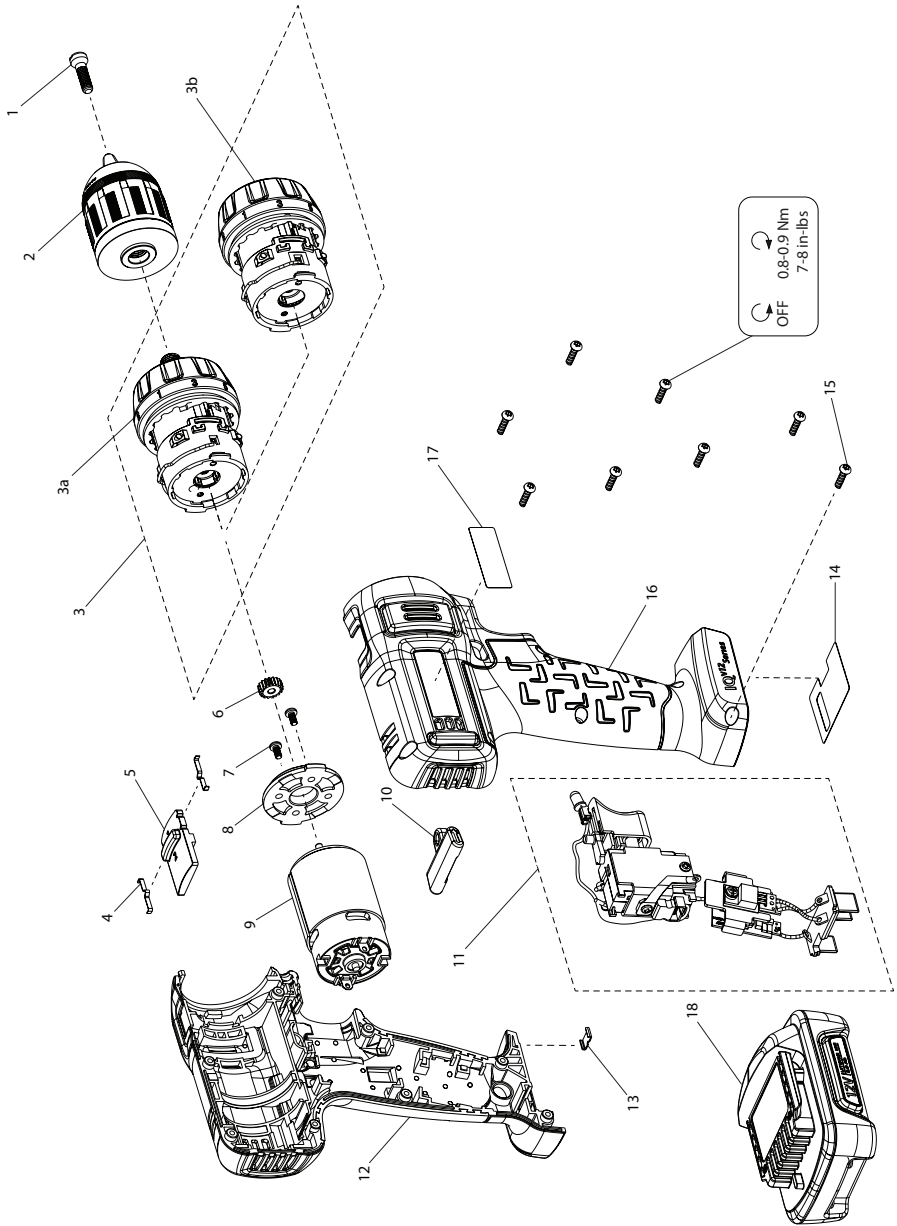


D1000 Series, Cordless Drill/Driver and Screwdriver - Exploded View



(Dwg. 47500110)



D1000 Series, Cordless Drill/Driver and Screwdriver - Parts List

Item	Part Description	Part Number	Item	Part Description	Part Number
*	Chuck Kit	D1130-K255	10	Forward/Reverse Actuator	W1000-75
1	Screw, Chuck	--	11	Switch-LED-PCB-Battery Connector Module	D1000-K93
2	Chuck	--	*	Housing Kit (includes items 12 to 17)	D1000-K40
3	Gear Box Assembly	--	12	Left Housing	--
3a	Gear Box for Drill/Driver D1130	D1130-K750	13	Housing Clip	--
3b	Gear Box for Screwdriver D1410	D1410-K750	14	Information Label	--
*	High/Low Speed Actuator Kit	D1000-K249	15	Screw, Housing (8 Required)	--
4	Speed Detents (2 Required)	--	16	Right Housing	--
5	High/Low Speed Switch	--	17	Warning Label	--
*	Electric Motor Kit	D1000-K54	18	12V Li-ion Battery Pack	BL1203
6	Pinion	--	*	Fastener Kit (includes item 15)	W1000-K105
7	Motor Mount Screw (2 Required)	--	*	Label Kit (includes items 14 & 17)	D1000-K99
8	Motor Mount Plate	--	*	Battery Charger	BC1110
9	Motor	--	*	Storage / Carrying Bag	IQV12-BAG

* Not illustrated.

Parts and Maintenance

When the life of the tool has expired, it is recommended that the tool be disassembled, degreased and parts be separated by material so that they can be recycled.

Tool repair and maintenance should only be carried out by an authorized Service Center.

Refer all communications to the nearest **Ingersoll Rand** Office or Distributor.

Related Documentation

For additional information refer to:

Cordless Drill/Driver Product Safety Information Manual 04581153.

Cordless Drill/Driver Product Information Manual 48489595.

Manuals can be downloaded from ingersollrandproducts.com.