



Form 16574667  
Edition 1  
April 2005

## Electric Screwdrivers

EL, EP and ET 34V DC Series

---

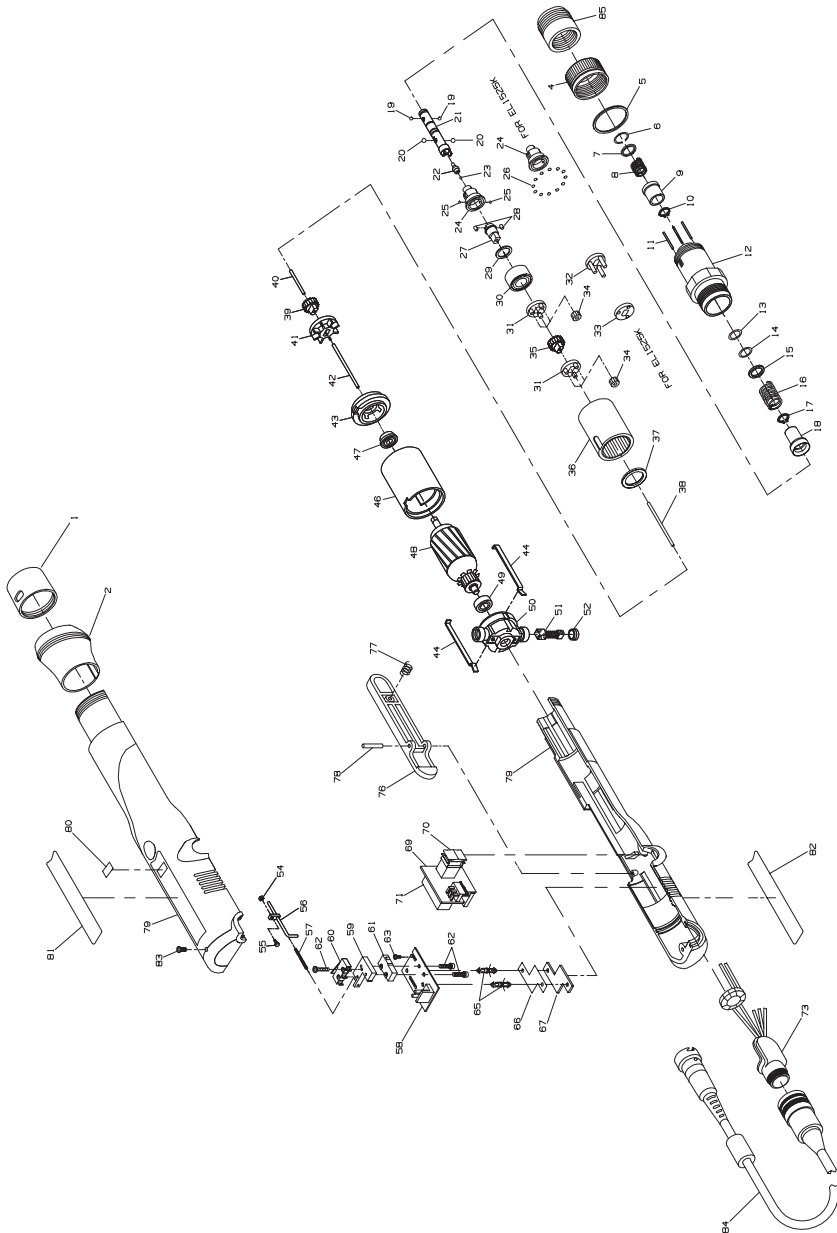
# Parts Information



**Save These Instructions**



# EL, EP and ET Electric Screwdriver Exploded Diagram



(Dwg. TPA1528)

## EL, EP and ET Electric Screwdriver Parts List

Item	Part Description	Part Number	Item	Part Description	Part Number
1	Retainer Coupling	EP4007N-125		for ET4011K (6)	EP4007N-10
2	Slanted Flange (standard)	EP4007N-124		for EL2616K (6)	EP2612N-10
*	Straight Flange (optional)	EP4007N-123		for EL1525K (3)	EP1520N-10
4	Clutch Adjusting Ring	EP4007N-582	35	Gear Head Pinion Gear	
5	Indicator Ring	EP4007N-682		for EL1512K and EL1525K	EP1510N-17
6	Bit Retainer Retaining Ring (Front) (for models ending in K only)	EP4007N-683		for ET4011K	EP4007N-17
				for EL2616K	EP2612N-17
7	Bit Retainer Collar (for models ending in K only)	EP4007N-585	36	Gear Case	
8	Bit Retainer Spring (for models ending K only)	EP4007N-931		for EL1512K	EP1510N-37
9	Bit Retainer Sleeve (for models ending in K only)	EP4007N-930		for all others	EP4007N-37
10	Bit Retainer Retaining Ring	EP4007N-584	37	Gear Case Shield	EP4007N-207
11	Clutch Adjusting Pin (3)	EP4007N-416	38	Clutch Pilot Rod "J" (2.26" long)	EP4007N-435
12	Clutch Housing Assembly		39	Fan Pinion Gear	
	for models ending in 1S5, 2S3 or 2S5	ET4007N2S5-580		for EL1512K	EP1510N-18
	for all other models	EP4007N-580		for ET4011K	EP4007N-18
				for EL2616K	EP2612N-18
13	Front Shim	EL4007N-623		for EL1525K	EP2603N-18
14	Rear Shim	EL4007N-624	40	Fan Pilot Rod "G" (.385" long)	EP4007N-436
15	Clutch Spring Plate	EP4007N-623	41	Fan	EP4007N-52
16	Clutch Spring			for EL1525K	EL1525K-52
	for EL2616K	EP2607N-583		for all others	EP4007N-52
	for EL1512K	EP1510N-583	42	Motor Pilot Rod "J" (2.71" long)	EP4007N-437
	for EL1525K	EP1520N-583		Motor Assembly	
	for ET4011K	EP4007N-583		for EL1512K	EP1512K-A53
17	Taper Ring Retaining Ring	EP4007N-584		for EL1525K	EL1525K-A53
18	Taper Ring Assembly			for EL2616K and EL4011K	EP2616K-A53
	for EL1525K	EP1520N-588	43	Front End Plate	EP4007N-11
	for EL1512K and EL2616K	EP2607N-588	44	Motor Assembly Spring (2)	EP4007N-98
	for ET4011K	EP4007N-588	46	Field	
19	Bit Retaining Ball (.094" dia.) (2) (for models ending in K only)	R000B-263		for EL1512K	EP2607N-54
				for all others	EP4007N-54
20	Pilot Cam Ball (.156" dia.) (2)	2U-696	47	Front Armature Bearing	EP4007N-24
21	Bit Holder Assembly	EP4007N-586	48	Armature	
22	Pilot	EP4007N-408		for EL1512K	EP1512K-53
23	Pilot Ball (.062" dia.)	EP4007N-422		for EL1525K	EP1525K-53
24	Cam Guide			for EL2616K and EL4011K	EP2616K-53
	for EL1525K	EP1520N-681	49	Rear Armature Bearing	EP4007N-22
	for all others	EP4007N-681	50	Rear End Plate	EP1512K-12
25	Cam Guide Ball (.156" dia.) (2)	2U-696	51	Brush Assembly (includes 10 pieces)	EP1512K-BP
26	Cam Guide Bearing Ball (23) (.078" dia.)		52	Brush Cap (2)	EP4007N-25
	for EL1525K	EL1520N-510	54	Adjusting Screw Nut	EP4007N-593
27	Cam		55	Pilot Rod Adjusting Screw	EP4007N-592
	for ET4011K	EP4007N-581	56	Pilot Rod "D"	EP4007N-438
	for all others	EP1510N-581	57	Pilot Rod Spring	EP4007N-595
28	Cam Roller (2)	EP4007N-587	58	Microswitch Circuit Board	ET4007N-220
29	Spindle Washer		59	Switch Plate	ET4007N-221
	for EL1525K	EP1520N-509	60	Shut-off Switch	EP4007N-223
	for all others	EP4007N-509	61	Start Switch	ET4007N-222
30	Spindle Bearing	EP4007N-510	62	Switch Screw (12mm) (4)	EP4007N-224
31	Spindle/Gear Head (2)		63	Switch Base Screw (5mm) (2)	EP4007N-226
	for EL1512K	EP2607N-216	*	Wire Assembly	EP1512K-45
	for EL2616K	EP2612N-216	65	Switch Base Spacer (2)	EP4007N-225
	for ET4011K	EP4007N-216	66	Insulating Film	EP4007N-227
32	Gear Head (for EL1525K)	EP1520N-216	67	Brush Light Circuit Board	EP1512K-228
33	Gear Head Spacer (for EL1525K)	EP1520N-108		Reverse Switch Circuit Board Assembly	E4011K-A229
34	Planet Gear		69	Reverse Switch Circuit Board	EP4004E-229
	for EL1512K (6)	EP1510N-10	70	Reverse Switch	EP4007N-329

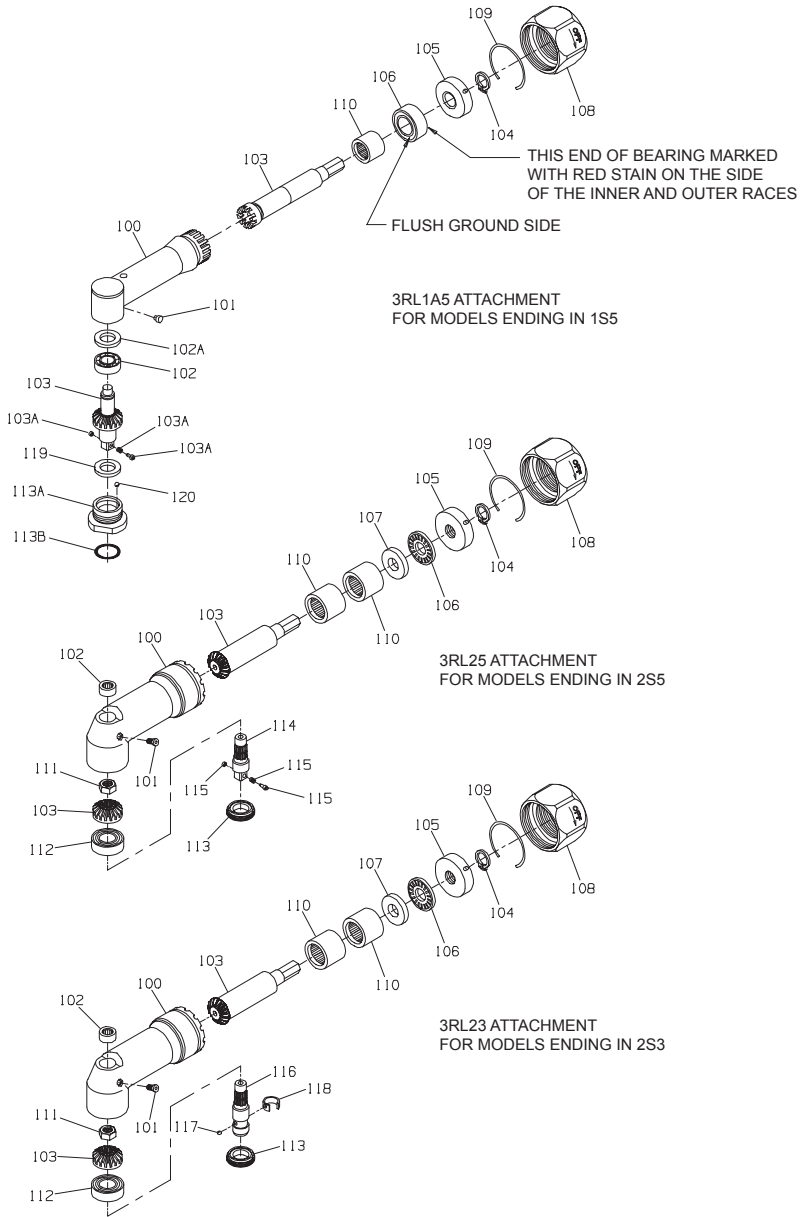
\* Not illustrated.

## EL, EP and ET Electric Screwdriver Parts List

Item	Part Description	Part Number	Item	Part Description	Part Number
*	Reverse Switch Rocker	EP4007N-330	84	Power Cord	EP1512K-239
71	Capacitor	EP4007N-230	85	Angle Head Coupling (for models ending in 1S5, 2S3 or 2S5 only)	EL4007N2S5-AHC
73	Receptacle Assembly	EP1512K-44			
75A	Housing Assembly		*	Microswitch Adjusting Wrench Package	ES60T-MSW
	for EL1512K	EL1512K-A40	*	Pistol Grip Assembly	EP4007N-48
	for EL2616K	EL2616K-A40	*	Switch Adjustment Gauge (for high torque models)	EP1510N-SG
	for ET4011K	EL4011K-A40	*	Gear Case Jig (for high torque models)	EP1510N-J37
	for EL1525K	EL1525K-A40	*	Hardware Package (includes illustrated items 6, 10, 17, 19[2], 44[2], 52[2], 54, 55, 62[4], 63[2], 66 and 83	EL4007N-HP
76	Throttle Lever	EL4007N-273	*	Maintenance Label	EP4007N-302
77	Throttle Spring	EL4007N-274			
78	Throttle Lever Pin	EL4007N-275			
80	Brush Light Cover	EP4007N-45			
81	Nameplate		*	English	EP4007N-302
	for EL1512K	EL1512K-301		French	EP4007N-302F
	for EL2616K	EL2616K-301		German	EP4007N-302G
	for ET4011K	EL4011K-301		Spanish	EP4007N-302S
	for EL1525K	EL1525K-301		Italian	EP4007N-302I
82	Warning Label	EP4004E-99	*	Extension Cord (2 m.l.)	EC29-249-2
83	Housing Screw (package of 10)	EP4007N-41			

\* Not illustrated.

**EL, EP and ET Angle Attachments Exploded Diagram**



(Dwg. TPA1514)

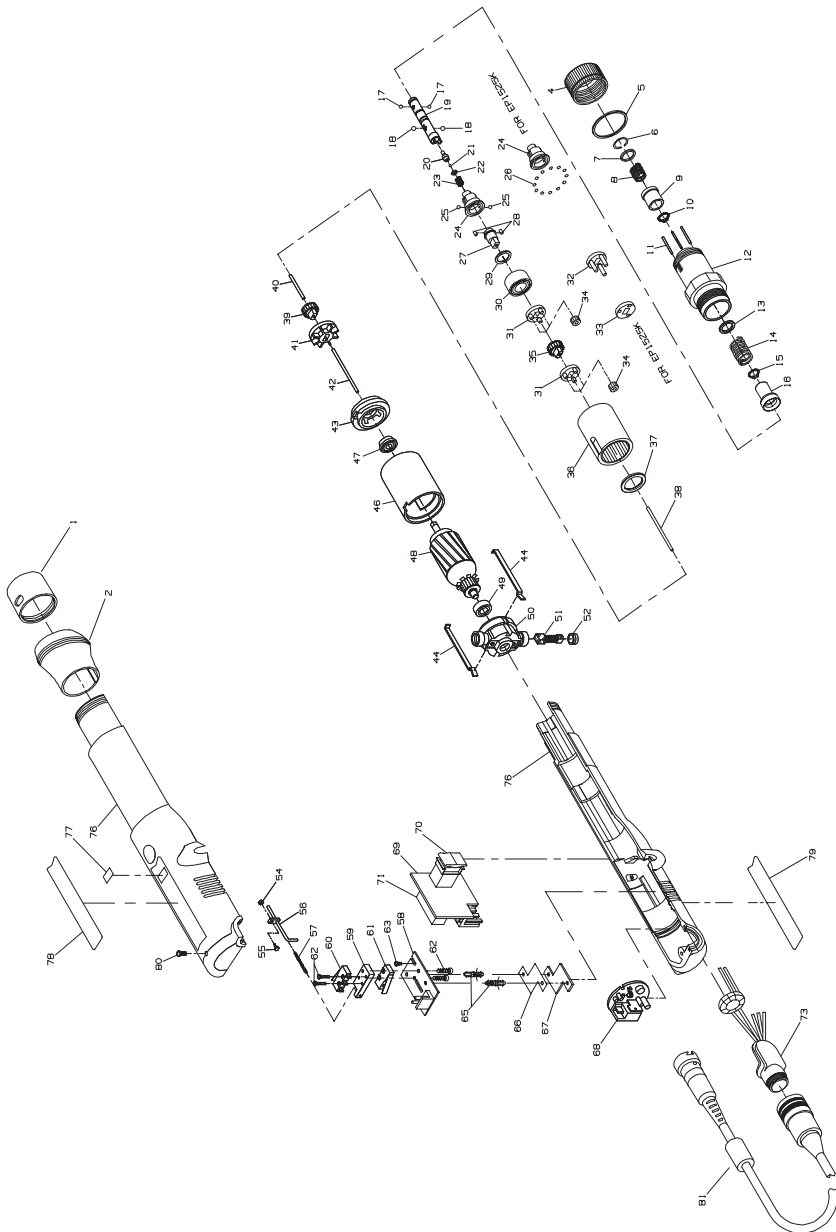
## EL, EP and ET Angle Attachments Parts List

Item	Part Description	For Models Ending in 1S5	For Models Ending in 2S3	For Models Ending in 2S5
	Angle Attachment	3RL1A5	3RL23	3RL25
100	Angle Housing Assembly	3RL1A-A550	3RL2-A550	3RL2-A550
101	Grease Fitting	D0F9-879	D059-879	D0F9-879
102	Spindle Upper Bearing	---	120A4-603	120A4-603
102	Spindle Upper Bearing	7L1A-603	---	---
102A	Shim Packet	7L1A-P448	---	---
103	Matched Gear Set (Bevel Gear and Pinion not sold separately)	3RL1A5-A591	3RL2-A552	3RL2-A552
103A	Socket Retainer Assembly (consists of Plunger, Spring and Washer)	500B-816A	---	---
104	Thrust Bearing Retainer	3RL2-705	3RL2-705	3RL2-705
105	Rear Thrust Bearing Seal	3RL2-682	3RL2-682	3RL2-682
106	Bevel Pinion Thrust Bearing	3RL1A-514	3RL2-105	3RL2-105
107	Front Thrust Bearing Seat	---	3RL2-683	3RL2-683
108	Coupling Nut	3RL2-27	3RL2-27	3RL2-27
109	Coupling Nut Retainer	3RL2-29	3RL2-29	3RL2-29
110	Bevel Pinion Bearing (2 for 3RL23) and 3RL25; 1 for 3RL1A5	7AH-24	H54U-511B	H54U-511B
111	Bevel Gear Retainer Nut	---	120A4-578	120A4-578
112	Spindle Lower Bearing	---	120A4-593	120A4-593
113	Angle Housing Cap	---	120A4-531	120A4-531
113A	Angle Housing Cap Assembly	3RL1A-A531	---	---
113B	Angle Housing Cap Seal	3RL1A-513	---	---
114	1/4" Square Drive Spindle Assembly	---	---	141A9-607-1/4
†115	Socket Retainer (consists of Plunger Spring and Washer)	---	---	500B-816A
116	1/4" Hex Bit Holder Spindle Assembly (for standard bits)	---	5L2C3-B586	---
117	Bit Retaining Ball (.125" diameter)	---	AV1-225	---
118	Bit Retaining Spring	---	102A60-241	---
119	Ball Race	3RL1A-532	---	---
120	Steel Ball (1/6" diameter) (20)	3RL1A-512	---	---
*	Housing Cap Wrench	---	141A12-26	141A12-26

\* Not illustrated.

† To keep downtime to a minimum, it is desirable to have on hand certain repair parts. We recommend that you stock one (pair or set ) of each part indicated by a (†) for every four tools in service.

EL, EP and ET Electric Screwdriver Exploded Diagram



(Dwg. TPA1529)

## EL, EP and ET Electric Screwdriver Parts List

Item	Part Description	Part Number	Item	Part Description	Part Number
1	Retainer Coupling	EP4007N-125		for EP4011K	EP4007N-10
2	Slanted Flange (standard)	EP4007N-124		for EP1525K (3)	EP1520N-10
*	Straight Flange (optional)	EP4007N-123	35	Gear Head Pinion Gear	
4	Clutch Adjusting Ring	EP4007N-582		for EP1512K and EP1525K	EP1510N-17
5	Indicator Ring	EP4007N-682		for EP4011K	EP4007N-17
6	Bit Retainer Retaining Ring (Front)	EP4007N-683		for EP2616K	EP2612N-17
7	Bit Retainer Collar	EP4007N-585	36	Gear Case	
8	Bit Retainer Spring	EP4007N-931		for EP1512K	EP1510N-37
9	Bit Retainer Sleeve	EP4007N-930		for all others	EP4007N-37
10	Bit Retainer Retaining Ring	EP4007N-584	37	Gear Case Shield	EP4007N-207
11	Clutch Adjusting Pin (3)	EP4007N-416	38	Clutch Pilot Rod "I" (2.26" long)	EP4007N-435
12	Clutch Housing Assembly	EP4007N-580	39	Fan Pinion Gear	
13	Clutch Spring Plate	EP4007N-623		for EP1512K	EP1510N-18
14	Clutch Spring			for EP4011K	EP4007N-18
	for EP4011K	EP4007N-583		for EP2616K	EP2612N-18
	for EP2616K	EP2607N-583		for EP1525K	EP2603N-18
	for EP1525K	EP1520N-583	40	Fan Pilot Rod "G" (.385" long)	EP4007N-436
	for EP1512K	EP4007N-583	41	Fan	EP4007N-52
15	Taper Ring Retaining Ring	EP4007N-584		for EP1525K	EL1525K-52
16	Taper Ring Assembly			for all others	EP4007N-52
	for EP4011K	EP4007N-588	42	Motor Pilot Rod "J" (2.71" long)	EP4007N-437
	for EP1525K	EP1520N-588		Motor Assembly	
	for EP2616K and EP1512K	EP2607N-588		for EP1512K	EP1512K-A53
17	Bit Retaining Ball (.094" dia.) (2)	R000B-263		for EP1525K	EP1525K-A53
18	Pilot Cam Ball (2) (.156" dia.) (4)	2U-696		for all others	EP2616K-A53
19	Bit Holder Assembly	EP4007N-586	43	Front End Plate	EP4007N-11
20	Pilot	EP4007N-408	44	Motor Assembly Spring (2)	EP4007N-98
21	Pilot Ball (.062" dia.)	EP4007N-422	46	Field	
22	Pilot Push Spring Washer	EP4007N-421		for EP1512K	EP2607N-54
23	Pilot Push Spring	EP4007N-420		for all others	EP4007N-54
24	Cam Guide		47	Front Armature Bearing	EP4007N-24
	for EP1525K	EP1520N-681	48	Armature	
	for all others	EP4007N-681		for EP1512K	EP1512K-53
25	Cam Guide Ball (2) (.156" dia.)	2U-696		for EP1525K	EP1525K-53
26	Cam Guide Bearing Ball (23) (for EP1525K)	EP1520N-510		for EP2616K and EP4011K	EP2616K-53
27	Cam		49	Rear Armature Bearing	EP4007N-22
	for EP4011K	EP4007N-581	50	Rear End Plate	EP4007N-12
	for all others	EP1510N-581	51	Brush Assembly (includes 10 pieces)	EP1512K-BP
28	Cam Roller (2)	EP4007N-587	52	Brush Cap (2)	EP4007N-25
29	Spindle Washer		54	Adjusting Screw Nut	EP4007N-593
	for EP1525K	EP1520N-509	55	Pilot Rod Adjusting Screw	EP4007N-592
	for all others	EP4007N-509	56	Switch Pilot Rod "D"	EP4007N-438
30	Spindle Bearing	EP4007N-510	57	Pilot Rod Spring	EP4007N-595
31	Spindle/Gear Head (2)		58	Microswitch Circuit Board	EP4007N-220
	for EP1512K	EP2607N-216	59	Switch Plate	EP4007N-221
	for EP2616K	EP2612N-216	60	Shut-off Switch	EP4007N-223
	for EP4011K	EP4007N-216	61	Start Switch	EP4007N-222
32	Gear Head (for EP1525K)	EP1520N-216	62	Switch Screw (12 mm) (4)	EP4007N-224
33	Gear Head Spacer (for EP1525K)	EP1520N-108	63	Switch Base Screw (5 mm) (2)	EP4007N-226
34	Planet Gear		*	Wire Assembly	EP1512K-45
	for EP1512K	EP1510N-10	65	Switch Base Spacer (2)	EP4007N-225
	for EP26016K	EP2612N-10	66	Insulating Film	EP4007N-227

\* Not illustrated.



## EL, EP and ET Electric Screwdriver Parts List

Item	Part Description	Part Number	Item	Part Description	Part Number
67	Brush Light Circuit Board	EP1512K-228	79	Warning Label	EP4004E-99
	Reverse Switch Circuit Board Assembly	EP4011K-A229	80	Housing Screw (package of 10)	EP4007N-41
69	Reverse Switch Circuit Board	EP4004E-229	81	Power Cord	EP1512K-239
70	Reverse Switch	EP4007N-329	*	Microswitch Adjusting Wrench Package	ES60T-MSW
71	Capacitor	EP4007N-230	*	Pistol Grip Assembly	EP4007N-48
73	Receptacle Assembly	EP1512K-44	*	Extension Cord	EC29-249-2
	Housing Assembly		*	Switch Adjustment Gauge (for high torque models)	EP1510N-SG
	for EP1512K	EP1512K-A40			
	for EP2616K	EP2612K-A40		Gear Case Jig (for high torque models)	EP1510N-J37
	for EP4011K	EP4011K-A40	*	Hardware Package (includes illustrated items 6, 10, 15, 17 [2], 44 [2], 52 [2], 54, 55, 62 [4], 63 [2], 66 and 80	
	for EP1525K	EP1525K-A40			
76	Housing Package	EP4007N-40			EP4007N-HP
77	Brush Light Cover	EP4007N-45	*	Maintenance Label	
78	Nameplate			English	EP4007N-302
	for EP1512K	EP1512K-301		French	EP4007N-302F
	for EP2616K	EP2616K-301		German	EP4007N-302G
	for EP4011K	EP4016K-301		Spanish	EP4007N-302S
	for EP1525K	EP1525K-301		Italian	EP4007N-302I

\* Not illustrated.

## Parts and Maintenance

When the life of the tool has expired, it is recommended that the tool be disassembled, degreased and parts be separated by material so that they can be recycled.

Tool repair and maintenance should only be carried out by an authorized Service Center.

Refer all communications to the nearest **Ingersoll-Rand** Office or Distributor.

## Related Documentation

For additional information refer to:

Electric Screwdrivers Product Safety Information Manual 16573685.

Electric Screwdrivers Product Information Manual 16578676.

Elec Screwdrivers Maintenance Information Manual 16575334.

Manuals can be downloaded from [www.irttools.com](http://www.irttools.com).



---

**Notes**



[www.irtools.com](http://www.irtools.com)

© 2005 Ingersoll-Rand Company