



16572828
Edition 2
May 2014

Air Drill

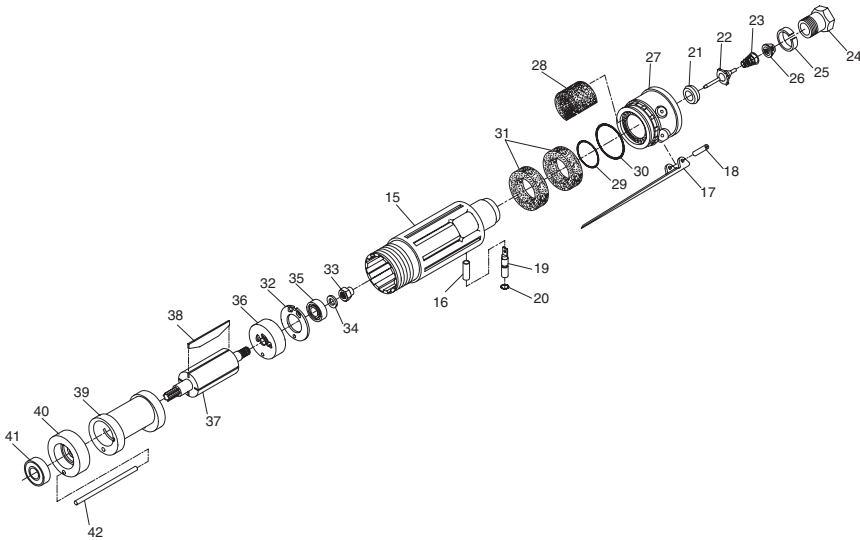
6 Series

Parts Information



Save These Instructions

6 Series Air Drill Power Unit Exploded Diagram



(Dwg.TPA1139-2)

6 Series Air Drill Power Unit Parts List

Item	Part Description	Part Number	Item	Part Description	Part Number
	Motor Housing Assembly		27	Rear Muffler Assembly	6WS-A23
	for 6L Models	6LH-A40	28†	Muffler Element	3RA-310
	for 6L-EU	6LH-EU-A40	29†	Silencer Seal Ring	WWW100A1-43
15	Motor Housing		30†	Exhaust Deflector Seal	6AH-103
	for 6L Models	6WS-B40	31†#	Exhaust Silencer (2)	4RL-311
	for 6L-EU Models	6WS-EU-B40	32†	Rear End Plate Gasket	6WRT-739
16	Throttle Plunger Bushing	7L-91	† 33	Rear Rotor Bearing Retaining Nut	6WT-118
*	Warning Label		34†	Bearing Thrust Washer	6WT-117
	for models ending in -EU	EU-99	35†	Rear Rotor Bearing	DG20-22
	for all other models	WARNING-7-99	36	Rear End Plate	6AH-12
17	Throttle Lever	7L-273	37	Rotor	
18	Throttle Lever Pin	7L-120		for H or J ratios (9 teeth)	6AH-53
19	Throttle Plunger Assembly	5LK2C-A94		for JJ ratio (12 teeth)	6AJ-53
20†	Throttle Plunger Seal	6LL-259		for K or R ratios (9 teeth)	6AK-53
21†	Throttle Valve Seat	7AH-303		for L ratio (6 teeth)	6AL-53
22†	Throttle Valve	7AH-302	38†	Vane Packet (set of 4 Vanes)	6WT-42-4
23†	Throttle Valve Spring	7L-51	39	Cylinder	6AH-3
24	Inlet Bushing	7L-565	40	Front End Plate	6WT-11
25	Inlet Bushing Spacer	7AH-65	41†	Front Rotor Bearing	R00H-97
26†	Air Strainer Screen	R0A2-61	42	Cylinder Dowel	6WT-98

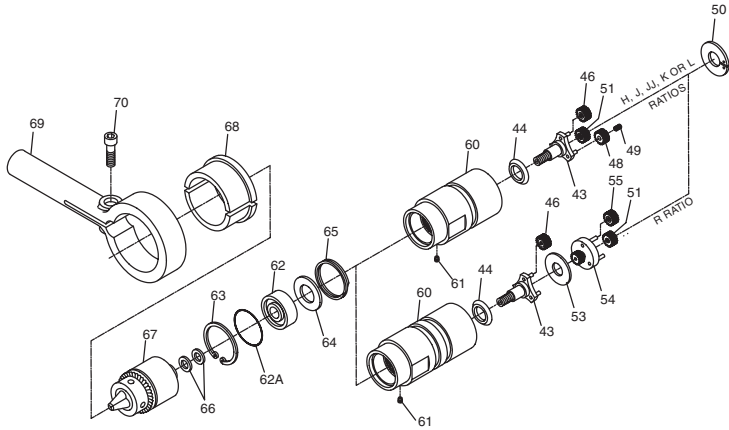
* Not illustrated

† Indicates Tune-up Kit part.

• To keep downtime to a minimum, it is desirable to have on hand certain repair parts. We recommend that you stock one (pair or set) of each part indicated by a bullet (•) for every four tools in service.

Model 6L Lever Throttle Drills are furnished with either one or two Exhaust Silencers (Part No. 4RL-311). Exhaust sound levels can be lowered and free speed reduced by adding a Silencer to models having only one Silencer. Exhaust sound levels can be raised and free speed increased by removing a Silencer from models furnished with two Silencers. **Do not use less than one Silencer.**

6 Series Air Drill Gear Unit Exploded Diagram



(Dwg. TPA1140-2)

6 Series Air Drill Gear Unit Parts List

Item	Part Description	Part Number	Item	Part Description	Part Number
43	Spindle Assembly			for all H, JJ, J, K and L ratio models	6AH-B37
	for H ratio	6AH-A8		for R ratio model ending in -EU	6AM-EU-B37
	for JJ ratio	6AJJ-A8		for all other R ratio models	6AM-B37
	for R ratio	6AP-A8	61	Grease Fitting	DOF9-879
	for K ratio	6AK-A8	62	Spindle Bearing	5A-510
	for L ratio	6AL-A8	62A†	Spindle Bearing Seal	6AH-103
	for J ratio	6AM-A8	63	Spindle Bearing Retainer	7L-28
44	Seal Support	5A-28	64	Grease Shield	5R-701
46	Spindle Planet Gear Assembly (3)		65	Shield Retainer	6LL-343
	for JJ or R ratios (18 teeth)	6WTP-A10	66	Drill Chuck Spacer (2 for R or S ratios; 1 for all other ratios)	5A-90
	for J ratio (16 teeth)	6WTN-A10	67	Drill Chuck	
	for K ratio (20 teeth)	6WTK-A10		for H, JJ, J, K or L ratio (0 to 1/4" (0 to 6.0 mm) capacity)	R00A-99
	for L ratio (20 teeth)	6WTL-A10	67	Drill Chuck	
48	Spindle Planet Gear (for H ratio) (14 teeth) (3)	6WTM-10		for H, JJ, J, K or L ratio (0 to 1/4" (0 to 6.0 mm) capacity)	R00A-99
49	Spindle Planet Gear Bearing (for H ratio) (3)	6WTM-500		for R ratio (0 to 3/8" (0 to 10 mm) capacity)	6A-99
50	Gear Retainer	6LL-81	*	Chuck Key	
51	Rotor Pinion			for R00A-99 chuck	R00A-J253
	for H ratio (21 teeth)	6WTM-17		for 6A-99 chuck	R0J-J253
	for J ratio (17 teeth)	6WTN-17	68	Dead Handle Adapter (2)	6A-49
53	Gear Head Spacer (for R ratio)	6LM-80	69	Dead Handle Assembly	R1A-A48
54	Gear Head		70	Pinch Bolt	510-638
	for R ratio (marked R)	6LR-216A	*	Chuck Shield Kit (for 1/4" and 5/16" chuck capacity models)	7AH-K309
55	Gear Head Planet Gear Assembly (3)		*	Grease Gun	R00A2-228
▣	for R ratio (20 teeth)	6WTK-A10	*	Piped-Away Exhaust Kit	7L-K284
	Gear Case Assembly		*	Horizontal Hanger Assembly	7RA-A366
	for H, JJ, J, K and L ratios	6AH-A37		Horizontal Hanger	7RA-366

Item	Part Description	Part Number	Item	Part Description	Part Number
	for R ratio	6AM-A37		Hanger Screw	AL-638
60	Gear Case		*	Vertical Hanger	7L-365
	for H, JJ, J, K and L ratio models ending in -EU	6AH-EU-B37	*	Tune-up Kit (includes illustrated items 20, 21, 22, 23, 26, 28, 29, 30, 31 [2], 32, 33, 34, 35, 38, 41 and 62A)	6-DRILLS-TK1

* Not illustrated

† Indicates Tune-up Kit part.

▣ The gears used in both the No. 6WTL-A10 and No. 6WTK-A10 Planet Gear Assemblies have 20 teeth. The Gear (Part No. 6WTK-A10) can be distinguished by the annular groove through the middle of the tooth.

Parts and Maintenance

When the life of the tool has expired, it is recommended that the tool be disassembled, degreased and parts be separated by material so that they can be recycled.

Tool repair and maintenance should only be carried out by an authorized Service Center.

Refer all communications to the nearest **Ingersoll Rand** Office or Distributor.

Related Documentation

For additional information refer to:

Air Drill Product Safety Information Manual 04580353.

Air Drill Product Information Manual 16572190.

Air Drill Maintenance Information Manual 16572604.

Manuals can be downloaded from ingersollrandproducts.com

ingersollrandproducts.com

© 2014 *Ingersoll Rand*

