



16606055
Edition 2
May 2014

Air Drill

7A Series

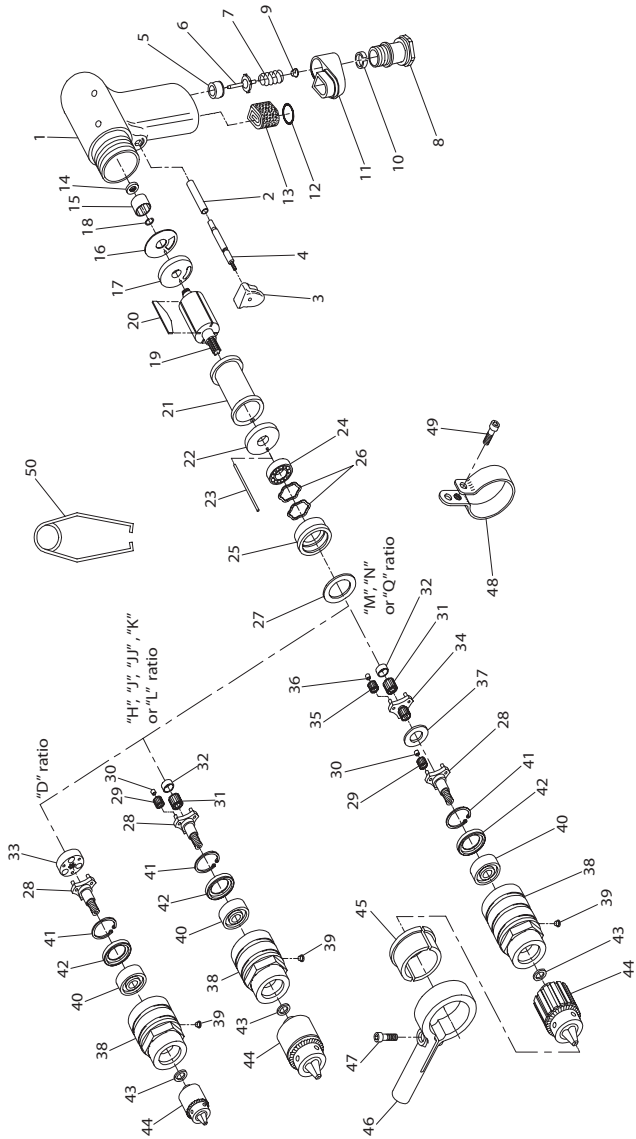
Parts Information



Save These Instructions

 **Ingersoll Rand**[®]

7A Series Air Drill Exploded Diagram



(Dwg. TPA1365-1)

7A Series Air Drill Parts List

Item	Part Description	Part Number	Item	Part Description	Part Number		
	Motor Housing Assembly		32	Rotor Pinion Spacer			
	for models ending in EU	7AH-EU-AST40A		for H, J, M or N ratio	7AH-18		
	for all other models	7AH-AST40A		for JJ ratio	7AJJ-18		
1	Motor Housing		33	Drive Plate (for D ratio)	7AD-171		
	for models ending in EU	7AH-EU-BST40A		34	Gear Head		
	for all other models	7AH-BST40A			for M ratio (16 teeth)	7AM-216	
*	Warning Label			for N ratio (10 teeth)	7AN-216		
	for models ending in EU	EU-99		for Q ratio (13 teeth)	7AQ-216		
	for all other models	WARNING-7-99	35	Gear Head Planet Gear Assembly (3)			
2	Trigger Bushing	4RA-91		for M or N ratio (15 teeth)	7AH-A10		
	Trigger Assembly	7AH-A93		for Q ratio (21 teeth)	7AP-A10		
3	Trigger	5RA-93	36	Gear Head Planet Gear Bearing (1 for each Gear) (for M, N or Q ratio)	7AH-500		
4	Trigger Pin	7AH-94		37	Gear Head Spacer (for M, N or Q ratio)	7AN-80	
◆ 5	Throttle Valve Seat	7AH-303	Gear Case Assembly				
◆ 6	Throttle Valve	7AH-302	for D, H, J, JJ, K or L ratio models ending in ST4 or ST6		7AH-A37A		
◆ 7	Throttle Valve Spring	7AH-51	for D, H, J, JJ, K or L ratio models ending in EU		7AH-EU-A37A		
8	Inlet Bushing Assembly	7AH-A565	for M, N or Q ratio models ending in ST6 or ST8		7AN-A37A		
◆ 9	Air Strainer Screen	ROA2-61	for M, N or Q ratio models ending in EU		7AN-EU-A37A		
10	Inlet Bushing Spacer	7AH-65	38		Gear Case		
11	Muffler Assembly	3RA-A123			for D, H, J, JJ, K or L ratio models ending in ST4 or ST6	7AH-B37A	
◆ 12	Muffler O-ring	85H-167			for D, H, J, JJ, K or L ratio models ending in EU	7AH-EU-B37A	
◆ 13	Muffler Element	7RA-311			for M, N or Q ratio models ending in ST6 or ST8	7AN-B37A	
◆ 14	Rear Rotor Bearing Nut	7AH-105A			for M, N or Q ratio models ending in EU	7AN-EU-B37A	
◆ 15	Rear Rotor Bearing	7AH-24			39	Grease Fitting	D0F9-879
◆ 16	Rear End Plate Gasket	7AH-739				40	Spindle Bearing
17	Rear End Plate	7AH-12			41		Spindle Bearing Retainer
◆ 18	Rear End plate Retainer	7AH-118			42	Grease Shield	7AH-701
19	Rotor				43	Drill Chuck Spacer	5A-90
	for D, H, J, L, M or N ratio (7 teeth)	7AH-53	44		Drill Chuck		
	for JJ ratio (6 teeth)	7AJJ-53			for D, H, J or JJ ratio (0 to 1/4" [0 to 6 mm] capacity)	R00A-99	
	for K or Q ratio (10 teeth)	7AK-53	for K, L or M ratio (0 to 3/8" [0 to 10 mm] capacity)	6A-99			
◆ 20	Vane Packet (set of 4 Vanes)	7AH-42A-4		for N or Q ratio (5/64" to 1/2" [2 to 13 mm] capacity)	R0K-99		
21	Cylinder	7AH-3A	*	Chuck Key			
22	Front End Plate	7AH-11		for R00A-99 chuck	R00A-J253		
23	Cylinder Dowel	7AH-98		for 6A-99 chuck	ROJ-J253		
◆ 24	Front Rotor Bearing	R1-22		for R0K-99 chuck	R1T-J253		
25	Front Rotor Bearing Housing	7AH-13	45	Dead Handle Label (for 7ANST8 and 7AQST8)	7AQ-245		
26	Bearing Spring Washer (2)	7AH-278		46	Dead Handle Adapter (2)	7A-49	
27	Bearing Housing Spacer	7AH-81	47	Dead Handle Assembly	R1A-A48		
28	Spindle		48	Pinch Bolt	510-638		
	for D or J ratio	7AJ-8A	49	Horizontal Hanger Assembly	7RA-A366		
	for H ratio	7AH-8		Horizontal Hanger	7RA-366		
	for JJ or Q ratio	7AQ-8A	50	Hanger Screw	AL-638		
	for K or N ratio	7AK-8	51	Vertical Hanger	7L-365		
	for L ratio	7AL-8		* Chuck Shield Kit (for D, H, J, JJ or K ratio)	7AH-K309		
	for M ratio	7AM-8A		* Warning Label (for N or Q ratio)	7AO-245		
29	Spindle Planet Gear Assembly (3)		*	Tune-up Kit (includes illustrated items 5, 6, 7, 9, 12, 13, 15, 16, 18, 20 and 24)	7A-DRILLS-TK1		
	for H ratio (15 teeth)	7AH-A10		45	Dead Handle Adapter (2)	7A-49	
	for J or M ratio (18 teeth)	7AJ-A10			46	Dead Handle Assembly	R1A-A48
	for JJ or Q ratio (19 teeth)	7AQ-A10			47	Pinch Bolt	510-638
	for K or N ratio (21 teeth)	7AK-A10			48	Horizontal Hanger Assembly	7RA-A366
for L ratio (22 teeth)	7AL-A10	49	Horizontal Hanger		7RA-366		
30	Spindle Planet Gear Bearing (1 for each Gear)		50	Hanger Screw	AL-638		
	for H ratio	7AH-500	51	Vertical Hanger	7L-365		
	for J, JJ, M or Q ratio	7AJ-500	*	Chuck Shield Kit (for D, H, J, JJ or K ratio)	7AH-K309		
	for K, L or N ratio	7AK-500	*	Warning Label (for N or Q ratio)	7AO-245		
31	Rotor Pinion		*	Tune-up Kit (includes illustrated items 5, 6, 7, 9, 12, 13, 15, 16, 18, 20 and 24)	7A-DRILLS-TK1		
	for H, M or N ratio (22 teeth)	7AH-17					
	for J ratio (16 teeth)	7AJ-17					
	for JJ ratio (13 teeth)	7AJJ-17					

* Not Illustrated

◆ Indicates Tune-up Kit part.

• To keep downtime to a minimum, it is desirable to have on hand certain repair parts. We recommend that you stock one (pair or set) of each part indicated by a bullet (•) for every four tools in service.

Parts and Maintenance

When the life of the tool has expired, it is recommended that the tool be disassembled, degreased and parts be separated by material so that they can be recycled.

Tool repair and maintenance should only be carried out by an authorized Service Center.

Refer all communications to the nearest **Ingersoll Rand** Office or Distributor.

Related Documentation

For additional information refer to:

Product Safety Information Manual 04580353.

Product Information Manual 03539731.

Maintenance Information Manual 16606063.

Manuals can be downloaded from ingersollrandproducts.com

Notes:

Notes:

Notes:

ingersollrandproducts.com

© 2014 *Ingersoll Rand*

