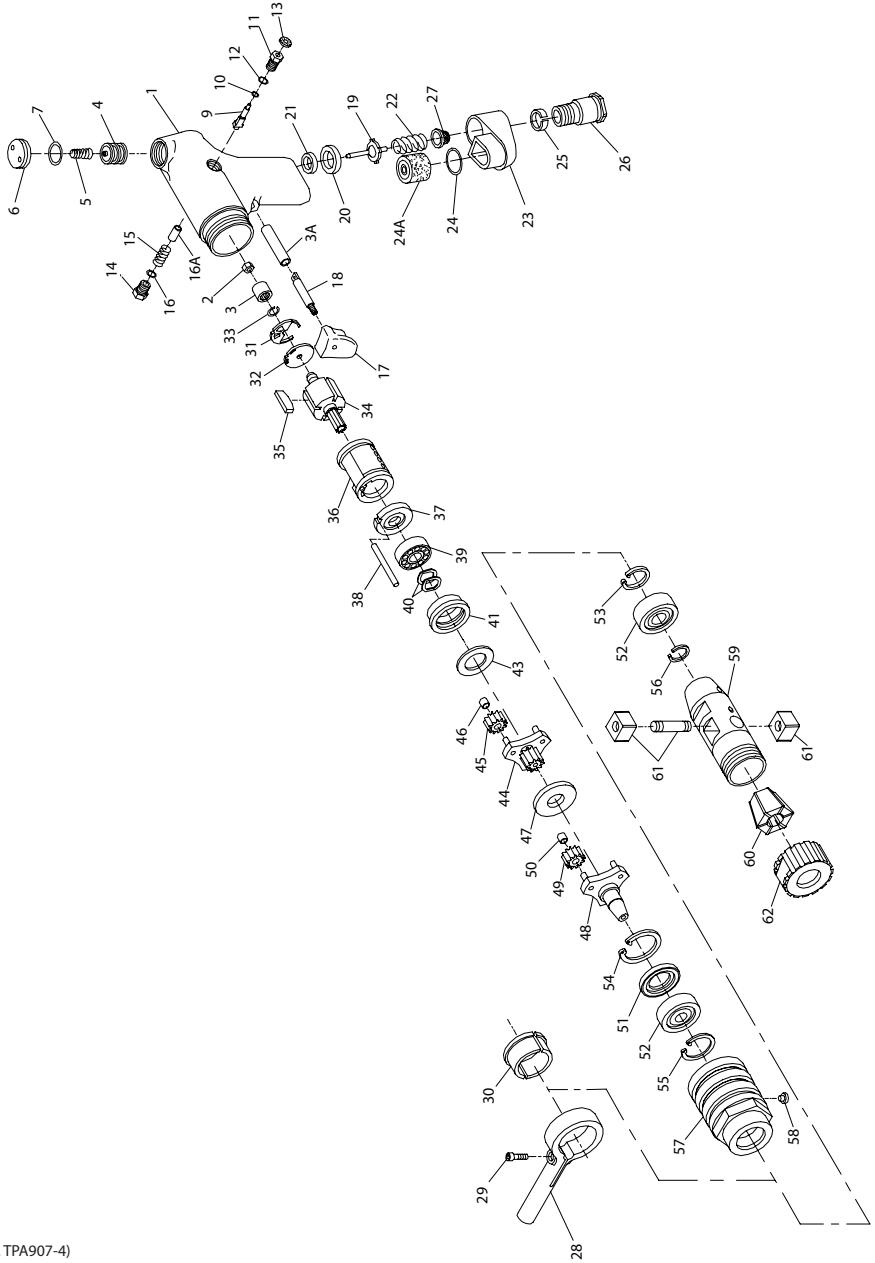


# 7RAQT4 Air Drill - Exploded View



(Dwg. TPA907-4)

## 7RAQT4 Air Drill - Parts List

Item	Part Description	Part Number	Item	Part Description	Part Number
	Motor Housing Assembly		30	Dead Handle Adapter (2)	7A-49
	for model 7RAQT4	7RA-A40	*	Nameplate	
	for model 7RAQT4-EU	7RA-EU-A40			for model 7RAQT4
1	Motor Housing			for model 7RAQT4-EU	4RA-EU-301
	for model 7RAQT4	7RA-B40	† 31	Rear End Plate Gasket	7RL-739
	for model 7RAQT4-EU	7RA-EU-B40	32	Rear End Plate	7RL-12
+ 2	Bearing Ejecting Nut		† 33	Rear End Plate Retainer	7AH-118
	for hex recess housing	7AH-105	34	Rotor	7RLK-53
	for round recess housing	7AH-105A	† • 35	Vane Packet (set of 4 Vanes)	7RL-42-4
† • 3	Rear Rotor Bearing	7AH-24	36	Cylinder	7RL-3
3A	Trigger Bushing	4RA-91	37	Front End Plate	7AH-11
*	Warning Label		38	Cylinder Dowel	7AH-98
	for 7RA-B40	WARNING-7-99	† • 39	Front Rotor Bearing	R1-22
	for 7RA-EU-B40	EU-99	40	Bearing Spring Washer (2)	7AH-278
4	Reverse Valve	7RA-329	41	Front Rotor Bearing Housing	7AH-13
5	Reverse Valve Spring	7RA-515	43	Bearing Housing Spacer	7AH-81
6	Reverse Valve Cap	7RA-269	44	Gear Head	7AQ-216
† • 7	Reverse Valve Cap Seal	7RA-358	45	Gear Head Planet Gear Assembly (3) (21 teeth)	7AP-A10
	Actuating Valve Assembly	7RA-A516	46	Gear Head Planet Gear Bearing (1 for each Gear)	7AH-500
9	Actuating Valve	7RA-B516	47	Gear Head Spacer	7AN-80
† • 10	Actuating Valve Face	R2F-167	48	Spindle	7RAQT4-8A
11	Actuating Valve Bushing Assy.	7RA-A518	49	Spindle Planet Gear Assembly (3) (19 teeth)	7AQ-A10
† 12	Valve Bushing Seal	ROBR1C-283	50	Spindle Planet Gear Bearing (1 for each Gear)	7AJ-500
13	Actuating Valve Button	7RA-520	51	Grease Shield	7AH-701
14	Actuating Valve Cap Assembly	7RA-A517	52	Spindle Bearing (2)	7RAQT-510
15	Actuating Valve Spring	7RA-519	53	Spindle Bearing Spacer	7RAQT-111
• 16	Actuating Valve Cap Seal	ROBR1C-283	54	Spindle Bearing Retainer	7AH-28
• 16A	Actuating Valve Bumper	7RA-664	55	Spindle Bearing Seat	7RAQT-118
	Trigger Assembly	7AH-A93	56	Spindle Retainer	R4800-119
17	Trigger	5RA-93	57	Gear Case Assembly	7RAQT-B37
18	Trigger Pin	7AH-94	58	Grease Fitting	D0F9-879
† 19	Throttle Valve	7RAK-302	59	Tap Chuck	7RAQT4-99
† 20	Throttle Valve Seat	7RAK-303	60	Chuck Collet	4U-103-1/2
21	Throttle Valve Seat Support	7RAK-304	61	Chuck Back Jaw Assembly	4U-102
† 22	Throttle Valve Spring	7AH-51	62	Chuck Nut	4U-104
23	Muffler Assembly	3RA-A123	*	Chuck Nut Wrench	4U-253
† • 24	Muffler O-Ring	85H-167	*	Chuck Body Wrench	7RAQT4-254
† 24A	Muffler Element	7RA-311	*	Tap Chuck Removal Wedge (2)	7RAQT4-200
25	Inlet Bushing Spacer	7AH-65	*	Tune-up Kit (includes illustrated parts 3, 7, 10, 12, 19, 20, 22, 24, 24A, 27, 31, 33, 35 and 39)	7RA-S/D-TK1
26	Inlet Bushing Assembly	7AH-A565			
† • 27	Air Strainer Screen	ROA2-61	*	Tune-up Kit (includes items 9, 10, 11, 12, 14, 15, 16, 16A)	7RAQT4-TK1
28	Dead Handle	R1A-48			
29	Pinch Bolt	510-638			

\* Not illustrated

† Indicates Tune-up Kit part.

• To keep downtime to a minimum, it is desirable to have on hand certain repair parts. We recommend that you stock one (pair or set) of each part indicated by a bullet (•) for every four tools in service.

+ Use 7AH-105 (hex nut) in housings with hex recess. Use 7AH-105A (round nut) in housings with round recess.

## Parts and Maintenance

When the life of the tool has expired, it is recommended that the tool be disassembled, degreased and parts be separated by material so that they can be recycled.

Tool repair and maintenance should only be carried out by an authorized Service Center.

Refer all communications to the nearest **Ingersoll Rand** Office or Distributor.

## Related Documentation

For additional information refer to:

Air Drill Product Safety Information Manual 04580353.

Air Drill Product Information Manual 16572273.

Air Drill Product Maintenance Manual 16572612.

Manuals can be downloaded from [ingersollrandproducts.com](http://ingersollrandproducts.com)



[ingersollrandproducts.com](http://ingersollrandproducts.com)

© 2014 **Ingersoll Rand**

**16572810**

Edition 3

May 2014