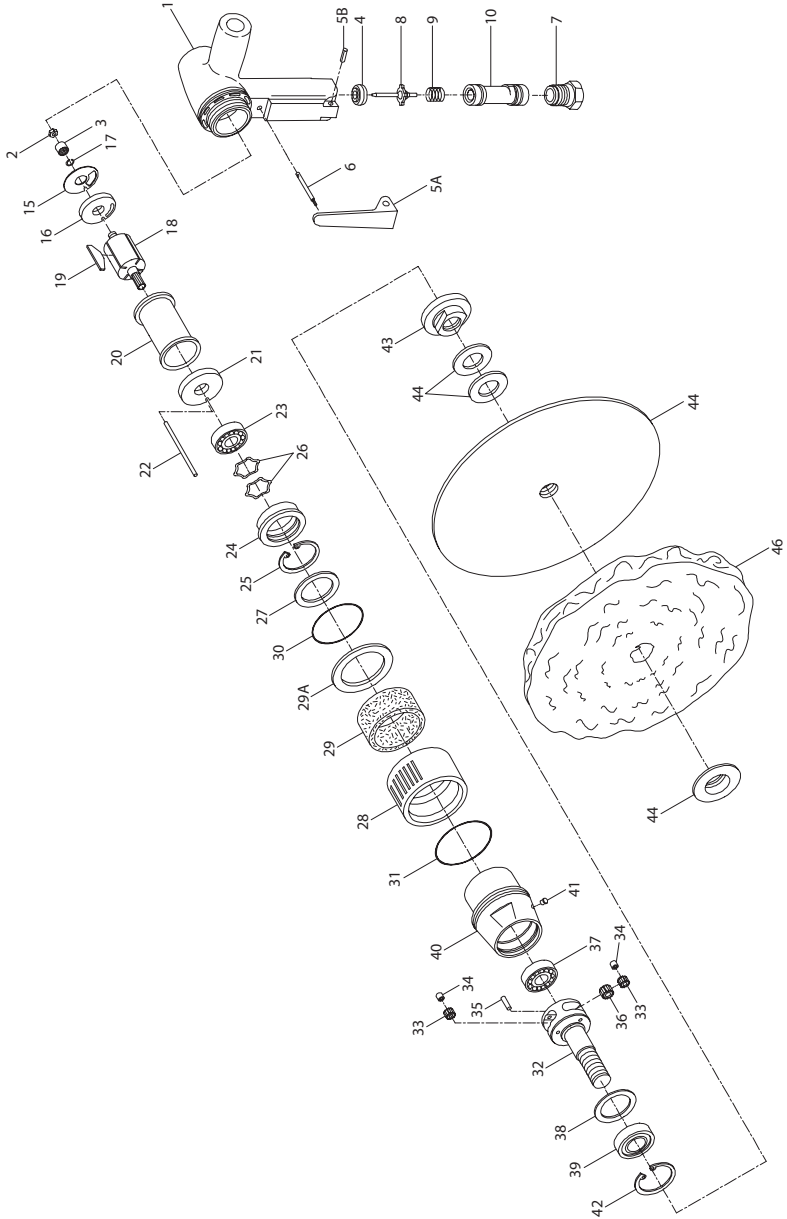


7P24L, 7S30L, 7S48L, 7S60L Sander and Polisher Exploded Diagram



(Dwg. TPA908-6)



7P24L, 7S30L, 7S48L, 7S60L Sander and Polisher Parts List

Item	Part Description	Part Number	Item	Part Description	Part Number
† 1	Motor Housing Assembly		31	Exhaust Deflector Front Seal	AF160-291Z
	for Models 7S60L, 7S48L, 7S30L and 7P24L	7S60L-A40	32	Arbor Assembly	
	for Models 7S60L-EU, 7S48L-EU, 7S30L-EU and 7P24L-EU	7S60L-EU-A40		for Model 7S60L	7S60-A4
		for Model 7S48L		7S48-A4	
*	Nameplate Kit			for Model 7S30L	7S30-A4
	for models ending in -EU	7S-EU-K301		for Model 7P24L	7P24-A4
	for all other models	7S-K301	33	Arbor	
*	Nameplate Screw (2)	BN403-302		for Model 7S60L	7S60-4
				for Model 7S48L	7S48-4
*	Warning Label			for Model 7S30L	7S30-4
	for models ending in -EU	EU-99		for Model 7P24L	7P24-4
	for all other models	WARNING-5-99	34	Arbor Planet Gear Assembly (3)	
2	Bearing Nut	7AH-105		for Model 7S60L	7AH-A10
3	Rear Rotor Bearing	7AH-24		for Model 7S48L	7AJ-A10
4	Throttle Valve Seat	2908-303		for Model 7S30L	7AK-A10
5A	Throttle Lever (for Models 7S60L, 7S48L, 7S30L and 7P24L)	7S60L-273		for Model 7P24L	7AL-A10
5B	Throttle Lever Pin (for Models 7S60L, 7S48L, 7S30L and 7P24L)	7L-120	35	Planet Gear Bearing (1 for each Gear)	
				for Model 7S60L	7AH-500
				for Model 7S48L	7AJ-500
6	Throttle Plunger (for Models 7S60L, 7S48L, 7S30L and 7P24L)	7S60-94		for Models 7S30L and 7P24L	7AK-500
7	Inlet Bushing	402-565	36	Arbor Planet Gear Shaft (3)	
8	Throttle Valve	LG2-302		for Model 7S60L	R31-121
9	Throttle Valve Spring	7S60-51		for Model 7S48L	7S48-191
10	Valve Spring Spacer	2905P-198		for Models 7S30L and 7P24L	7P24-191
15	Rear End Plate Gasket	7AH-739	37	Rotor Pinion	
16	Rear End Plate	7AH-12		for Model 7S60L	7AH-17
17	Rear End Plate Retainer	7AH-118		for Model 7S48L	7AJ-17
18	Rotor		38	Rear Arbor Bearing	7S60-97
	for Model 7S30L	7S30-53	39	Arbor Bearing Spacer	7AH-81
	for all others	7S60-53	40	Front Arbor Bearing	R2H-97
19	Vane Packet (set of 4 Vanes)	7RL-42-4	41	Gear Case Assembly	7S60-A37
20	Cylinder	7AH-3A	42	Grease Fitting	DOF9-879
21	Front End Plate	7AH-11	43	Arbor Bearing Retainer	S12-118
22	Cylinder Dowel	7AH-98	44	Inner Wheel Flange	7S60-86
23	Front Rotor Bearing	R1-22	46	Sanding Pad Assembly (firm)	77A-BM825-7
24	Front Rotor Bearing Housing	7S60-13	*	Wool Pad (for 7P24L)	P500-850
25	Front Rotor Bearing Retainer	W22-118	*	Arbor Wrench (15/16")	7RAQT4-254
26	Bearing Spring Washer (2)	7AH-278	*	Nameplate	7S60-301
27	Bearing Housing Spacer	7AH-81	*	Nameplate Screw (2)	BN403-302
28	Exhaust Deflector	7S60-23A	*	Tune-up Kit (consists of illustrated parts, 4, 8, 9 15, 17, 19, 29, 30 and 31)	7S60-TK2
29	Exhaust Silencer	7S60-311	*	Warning Label	TA-7S60
29A	Exhaust Diffuser	7S60-123	*	Sanding Pad Assembly (medium)	77A-AM825-7
30	Exhaust Deflector Rear Seal	DG20-103			

† Whenever a new Motor Housing Assembly is installed, select the correct Nameplate from the Nameplate Kit and attach it to the Housing with the Nameplate Screws.

* Not illustrated.

Parts and Maintenance

When the life of the tool has expired, it is recommended that the tool be disassembled, degreased and parts be separated by material so that they can be recycled.

Tool repair and maintenance should only be carried out by an authorized Service Center.

Refer all communications to the nearest **Ingersoll Rand** Office or Distributor.

Related Documentation

For additional information refer to:

Product Safety Information Manual 04580387.

Product Information Manual 03529385.

Product Maintenance Information Manual 16575045.

Manuals can be downloaded from ingersollrandproducts.com